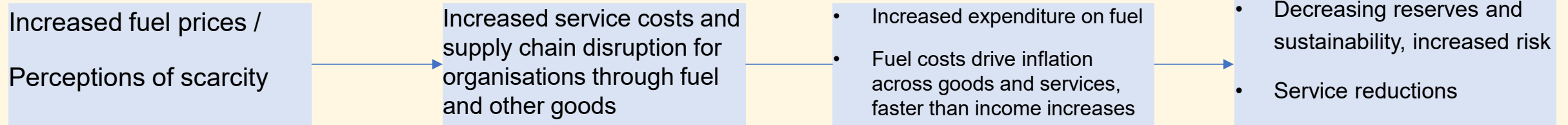


Future is uncertain

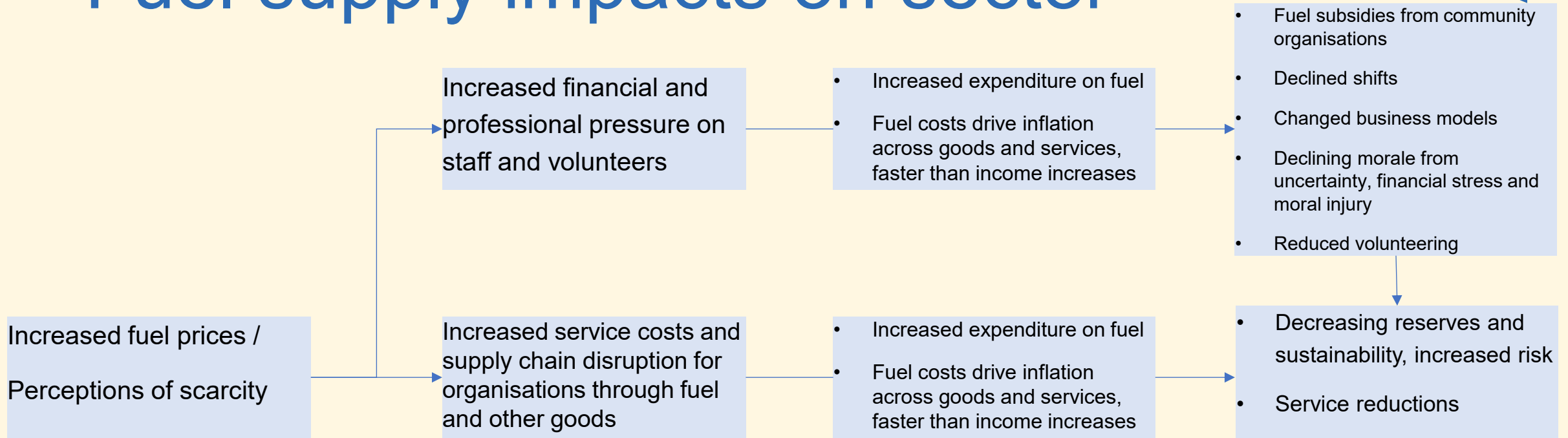


Calmly adjust to present, and plan for worsening of fuel supply situation, even while hoping for the best

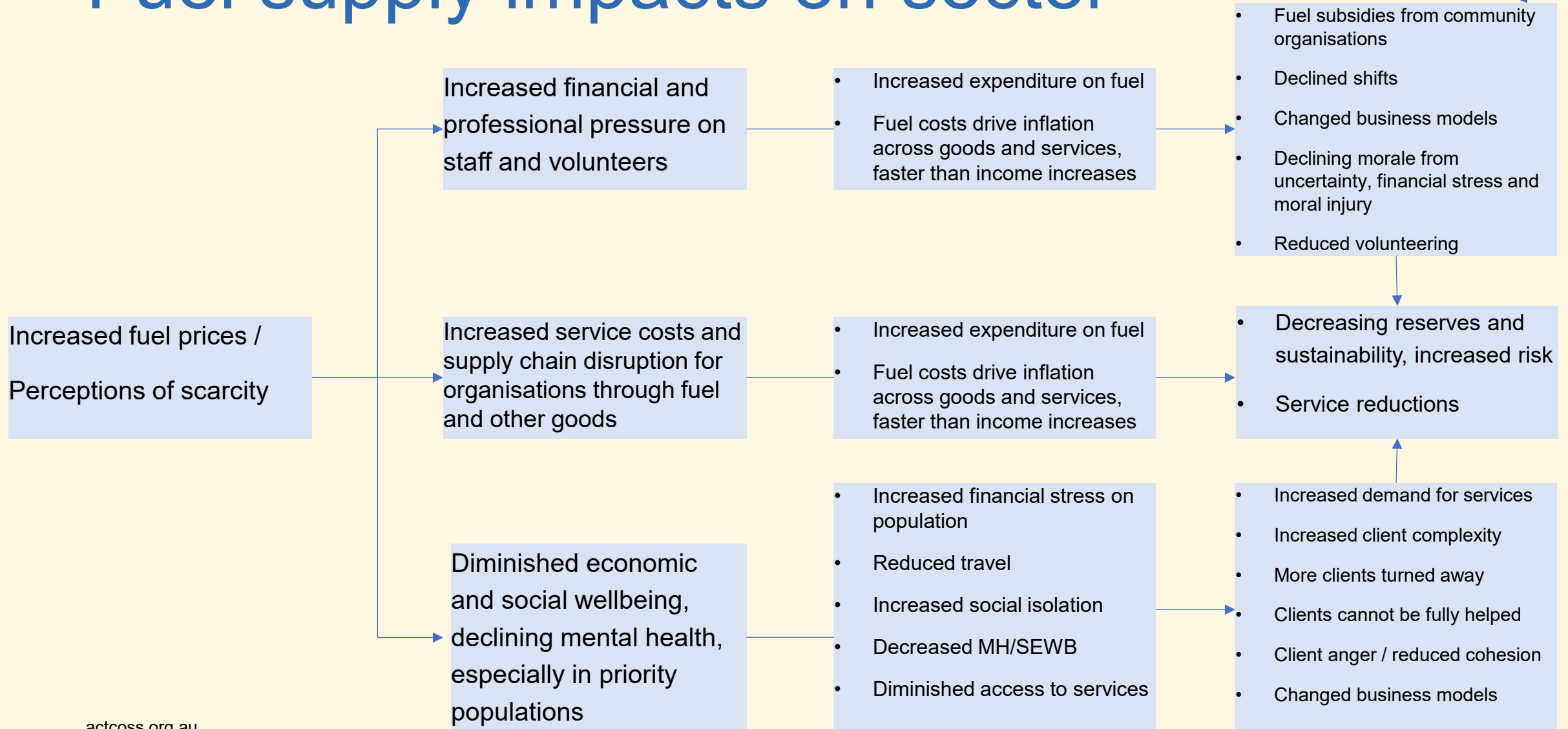
Fuel supply impacts on sector



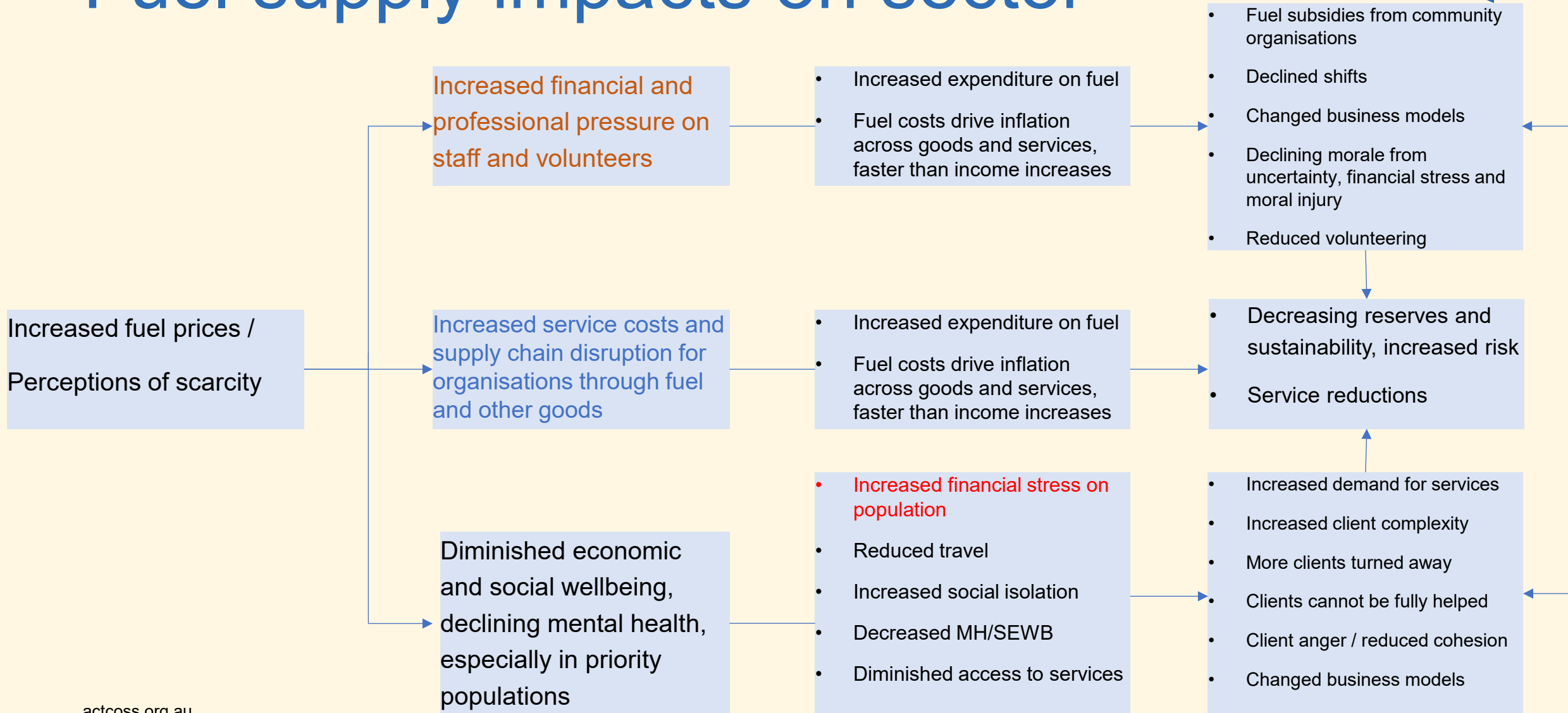
Fuel supply impacts on sector



Fuel supply impacts on sector



Fuel supply impacts on sector



Government policy options

Embed community sector in decision making and execution

Partner with the ACT community sector to monitor and respond to rising need during financial stress, including basic needs insecurity (food, energy, transport), housing and financial stress, family safety risks (e.g. family violence), and mental health impacts

Engage proactively with the community sector to track longer-term impacts and plan for sustained pressures on wellbeing and service capacity

Provide targeted, flexible support to community organisations to offset increased transport and operational costs, focusing on those services with high reliance on travel, logistics and outreach

Ensure continued access to essential services, including medical appointments, pharmacy access and in-home care, through support for community transport and service delivery models

Recognise fuel affordability as a barrier to workforce participation, particularly for casual and low-income workers, and consider ACT-level responses to mitigate this impact

